



Pits to Parks Restoration Project

Credit Valley Conservation



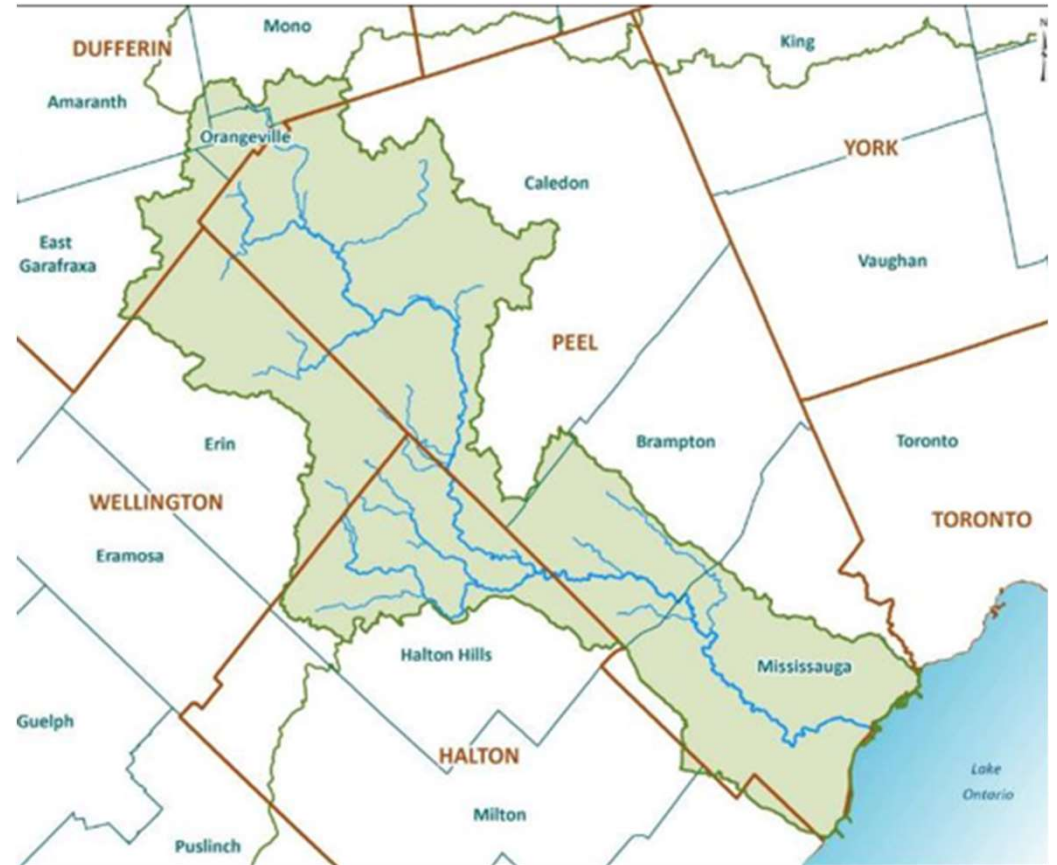
Content

Introduction
Credit Valley Conservation
Greenspace & Recreation
Pits to Parks Restoration
Project



Credit Valley Conservation

- Established in 1954
- Local initiative – unique watershed-based
- Community-based environmental organization
- Programs aimed to protect, restore and manage natural areas and water resources.



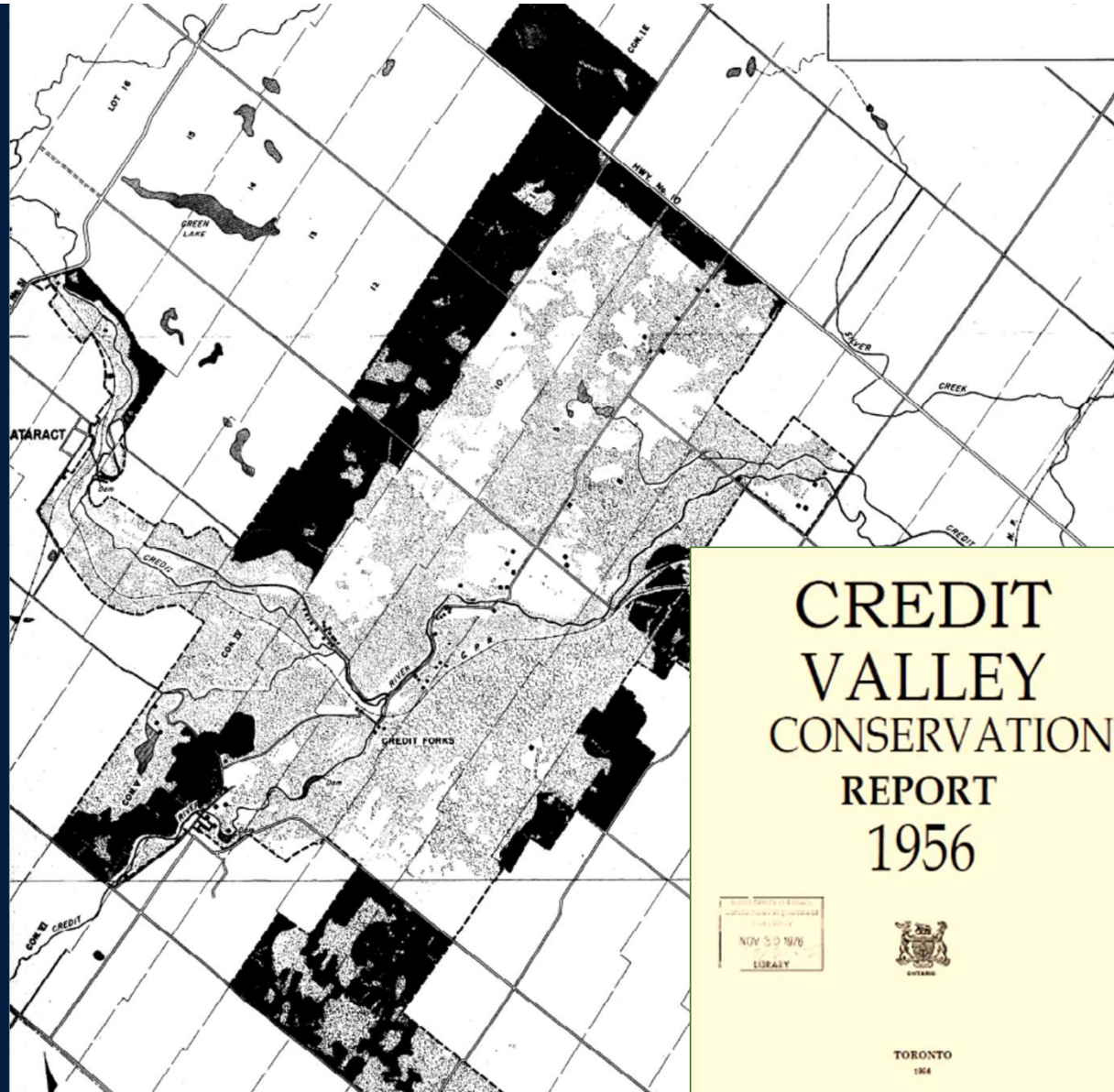
Conservation Authorities



- Conservation Authorities Act 1946
- Response to concerns about soil erosion, deforestation, flooding
- Hurricane Hazel 1954

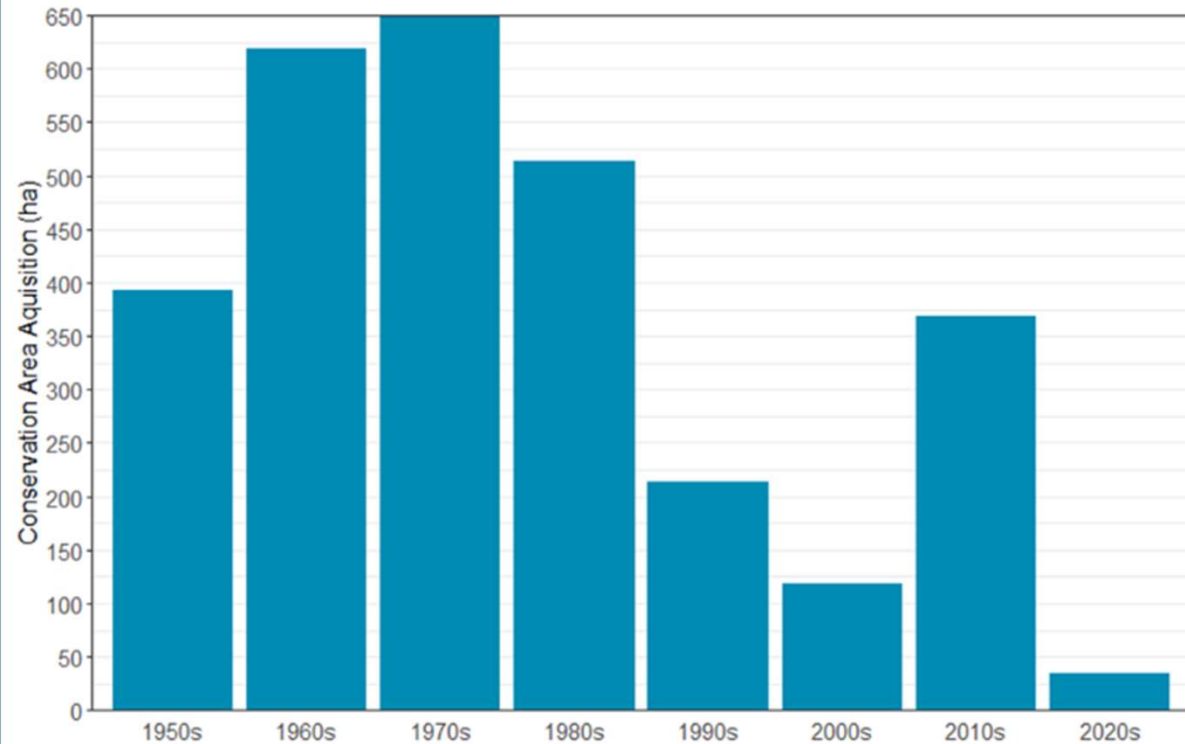
Conservation Authorities

- Manage land for hazards
- Provide recreation opportunities
- Restore degraded areas



CVC Land Acquisition by Decade

2,800 ha
300 parcels
Over 100 km of trail

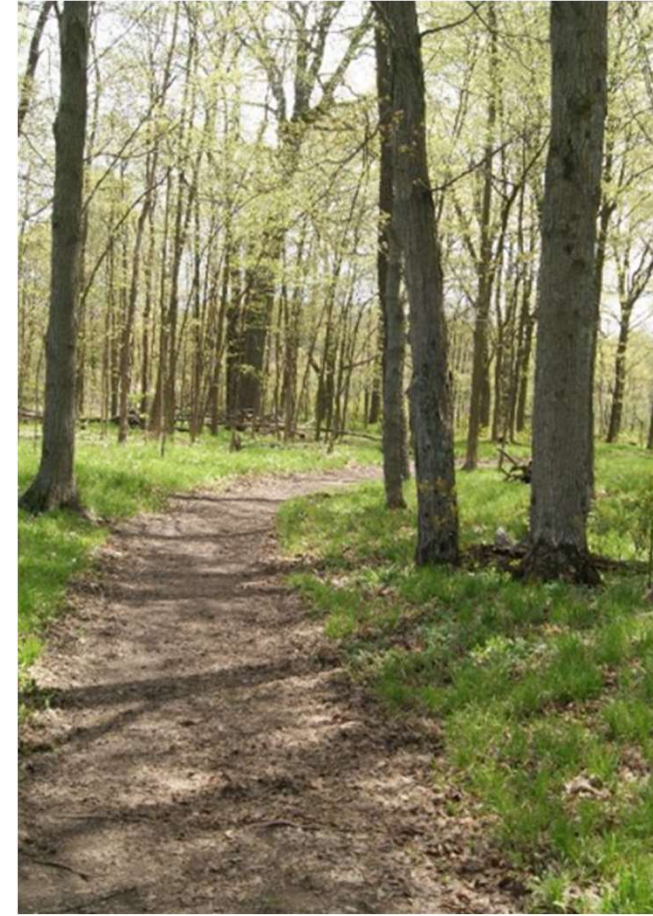


Watershed Greenspace System

Greenspace refers to any vegetated land or water that provides environmental and/or social values, or the potential to provide such value.



- Greenspace system is ~7,500 ha (18,500 acres)
- CVC's conservation areas system (2,800 ha)
- Provincial, municipal and public parks
- Trails, linear parks, institutional lands, stormwater management ponds

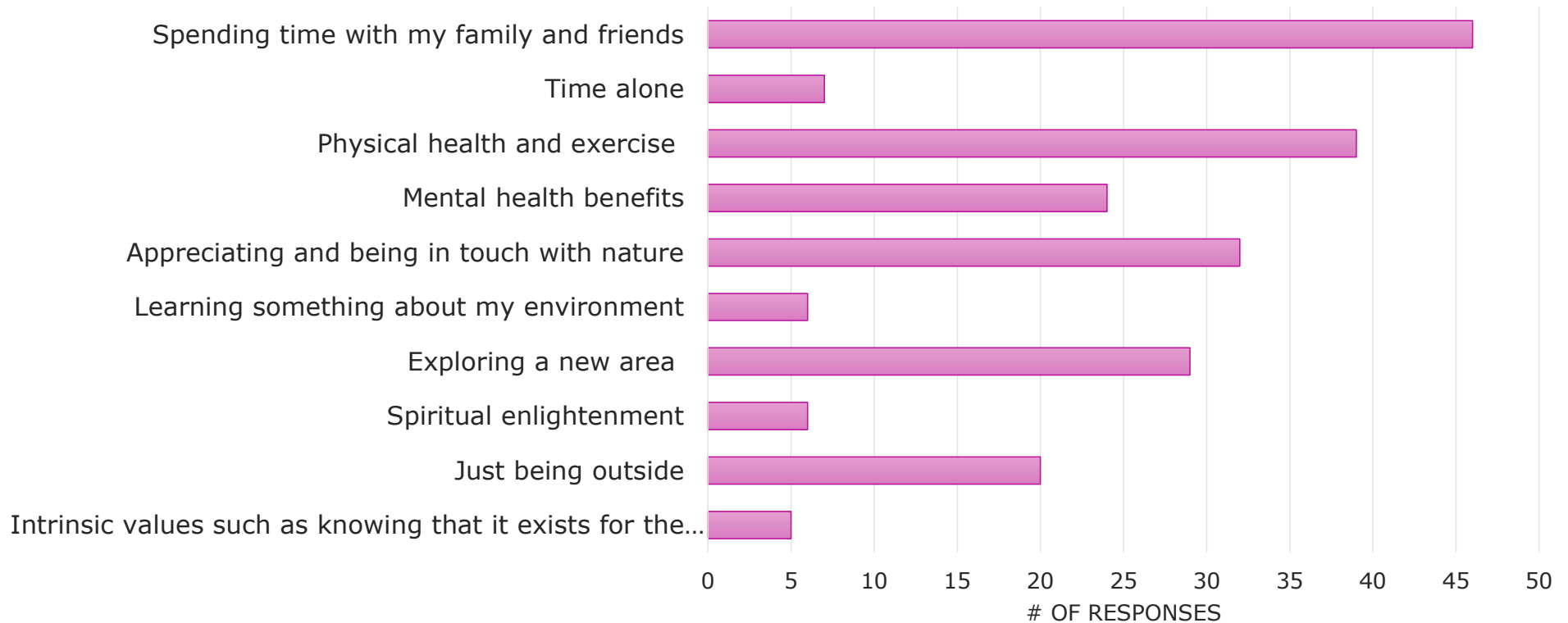


CVC Conservation Areas

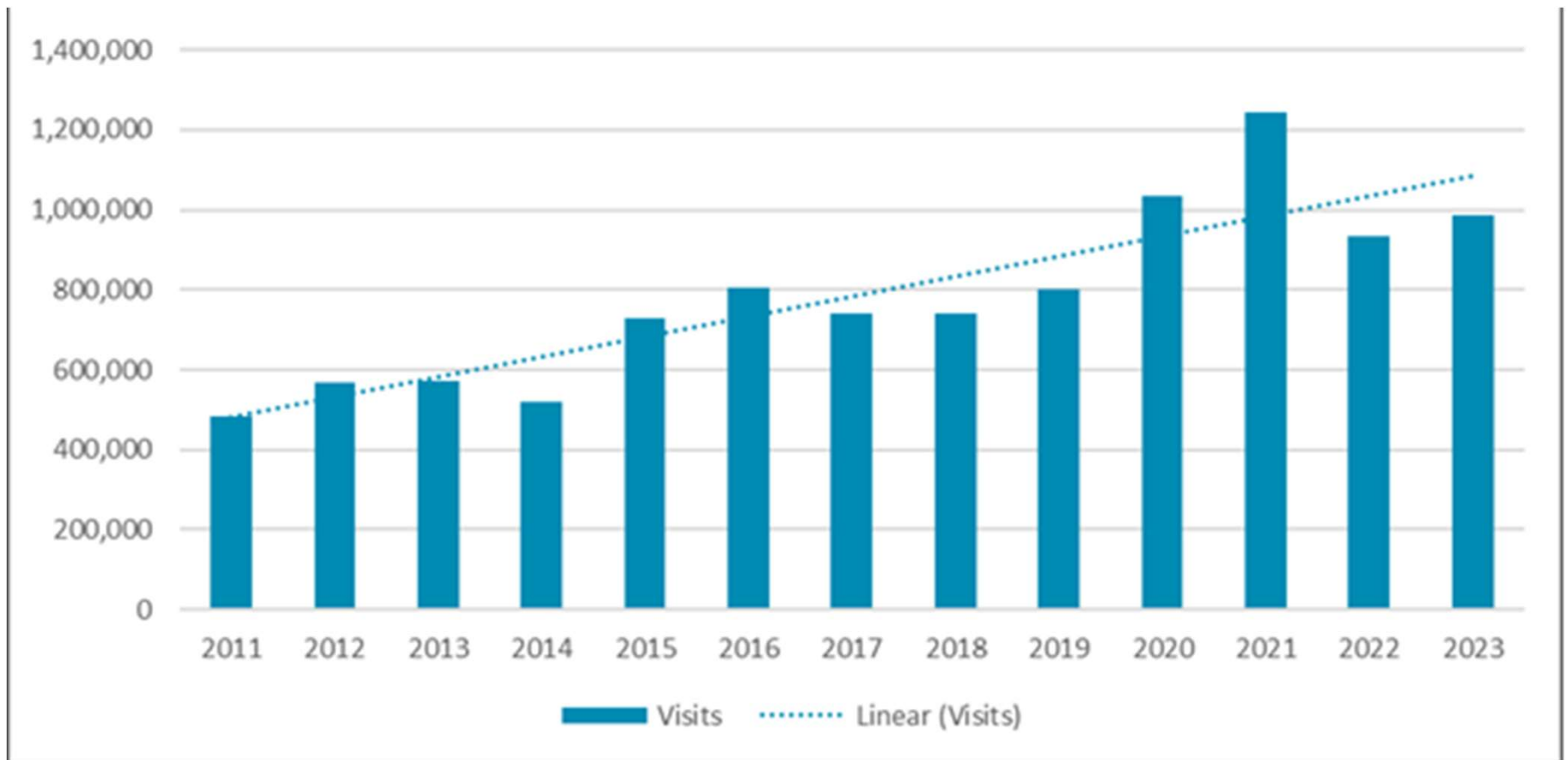


- Belfountain CA
- Upper Credit CA
- Terra Cotta - Silver Creek Complex
- Island Lake CA
- Ken Whillans CA
- Limehouse CA
- Elora-Cataract Trailway
- Meadowvale CA

What do you value most about greenspace?



Visitor Numbers



Parks and Nature:

Helps us to heal.

Provides essential ecosystem services (stormwater management, pollution reduction, climate change resilience, preservation of biodiversity).

Promote a sense of community and belonging.

Are linked to higher neighborhood satisfaction and perceptions of well-being.

Have a role to play as part of our reconciliation with Indigenous peoples.

Contain remnants of our past – rich culture, built heritage, natural heritage.

Encourage pro-nature conservation behaviours.

Availability of Greenspace

Greenspace available per person (within the watershed boundary) is not equitable:

- Watershed: 7.4 ha per 1,000 people
- Erin: 13.9 ha per 1,000 people
- Caledon: 154 ha per 1,000 people
- Brampton: 3.4 ha per 1,000 people

At CVC's most popular parks: 30% of visitors are from Brampton, 17% are from Toronto, 15% are from Mississauga.

Greenspace Pressures

Climate Change

Urbanization

Land Use Policies

Misuse of Greenspace

Land costs, land care costs



Greenspace is not increasing...

- Greenspace creation is not keeping up with population growth (or projected population growth)
- More people have to drive or take transit to visit greenspace
- Significant correlation between park access and population with higher income levels



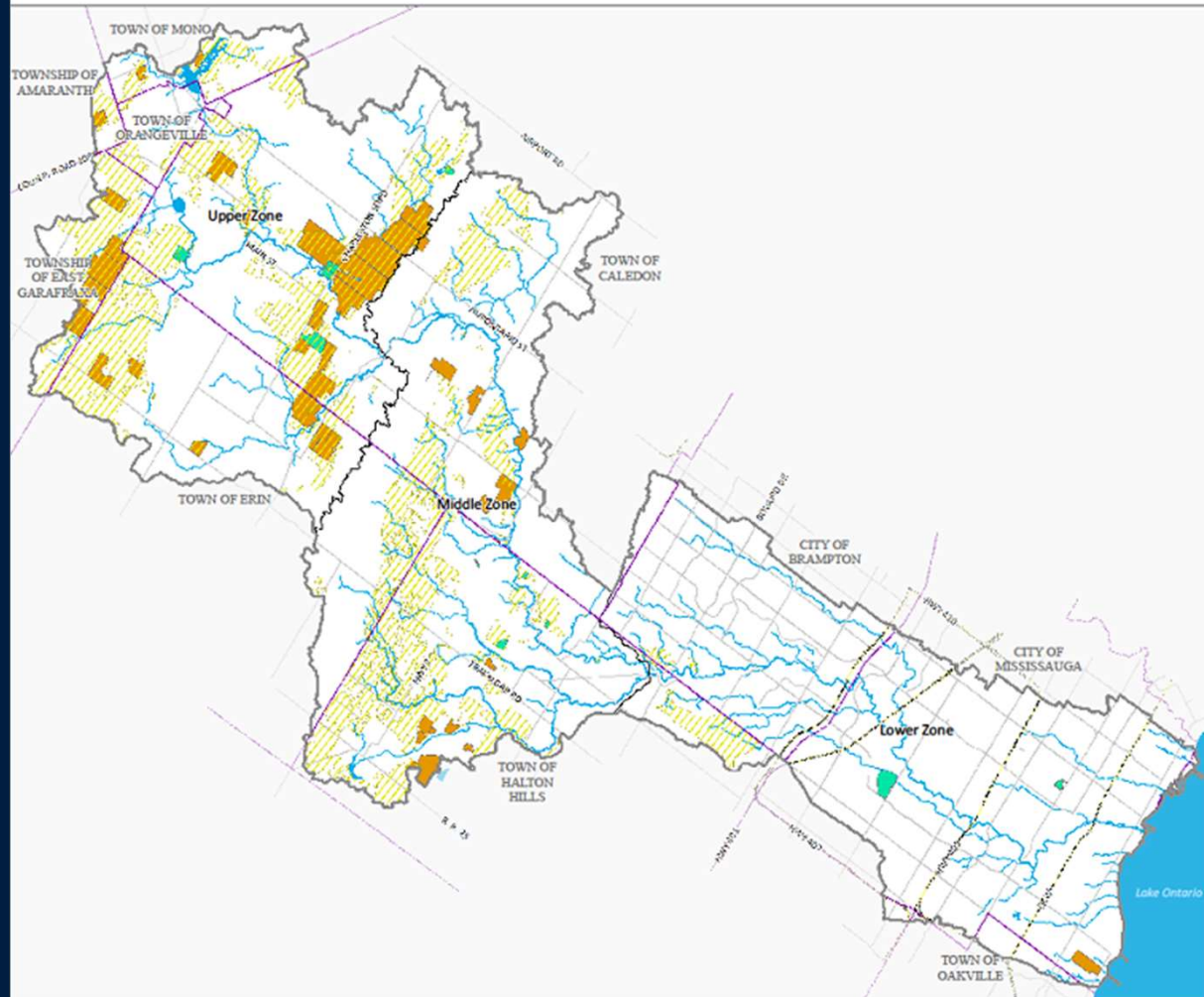
Pits to Parks Restoration Project

Aggregate Activity in the Watershed

1.2% is active aggregate

.3% is inactive aggregate

16% identified as
aggregate resources in
municipal Official Plans



Pit Restoration Challenges

Old licenses

Legislation

Abandoned pits and
quarries, or where licenses
have been revoked

Rehabilitation plans



Pits to Parks Overview



Beneficial Reuse of Excess Soil

- Municipal priority
- Municipal partnerships



Enhanced Ecological Restoration of Former Pits

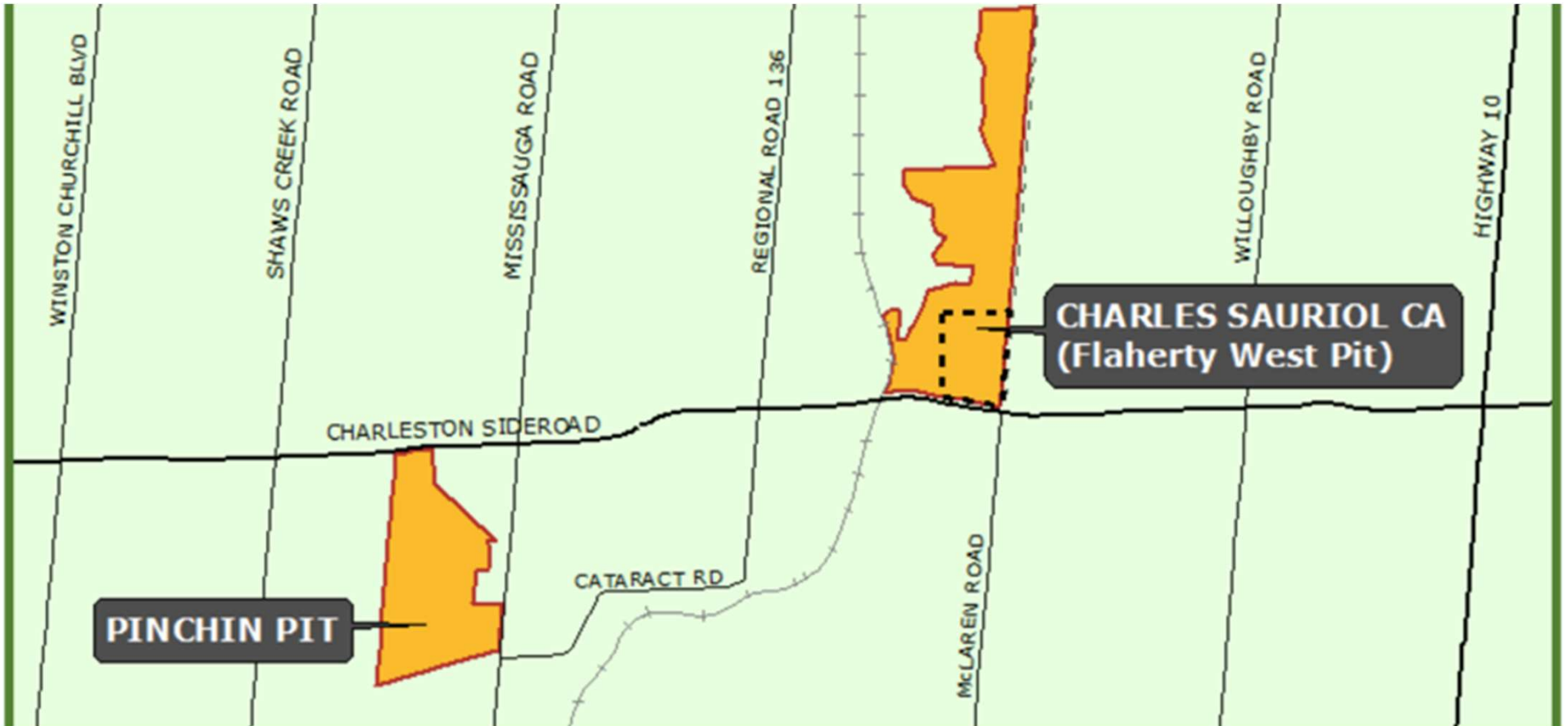
- Biodiversity
- Carbon sequestration

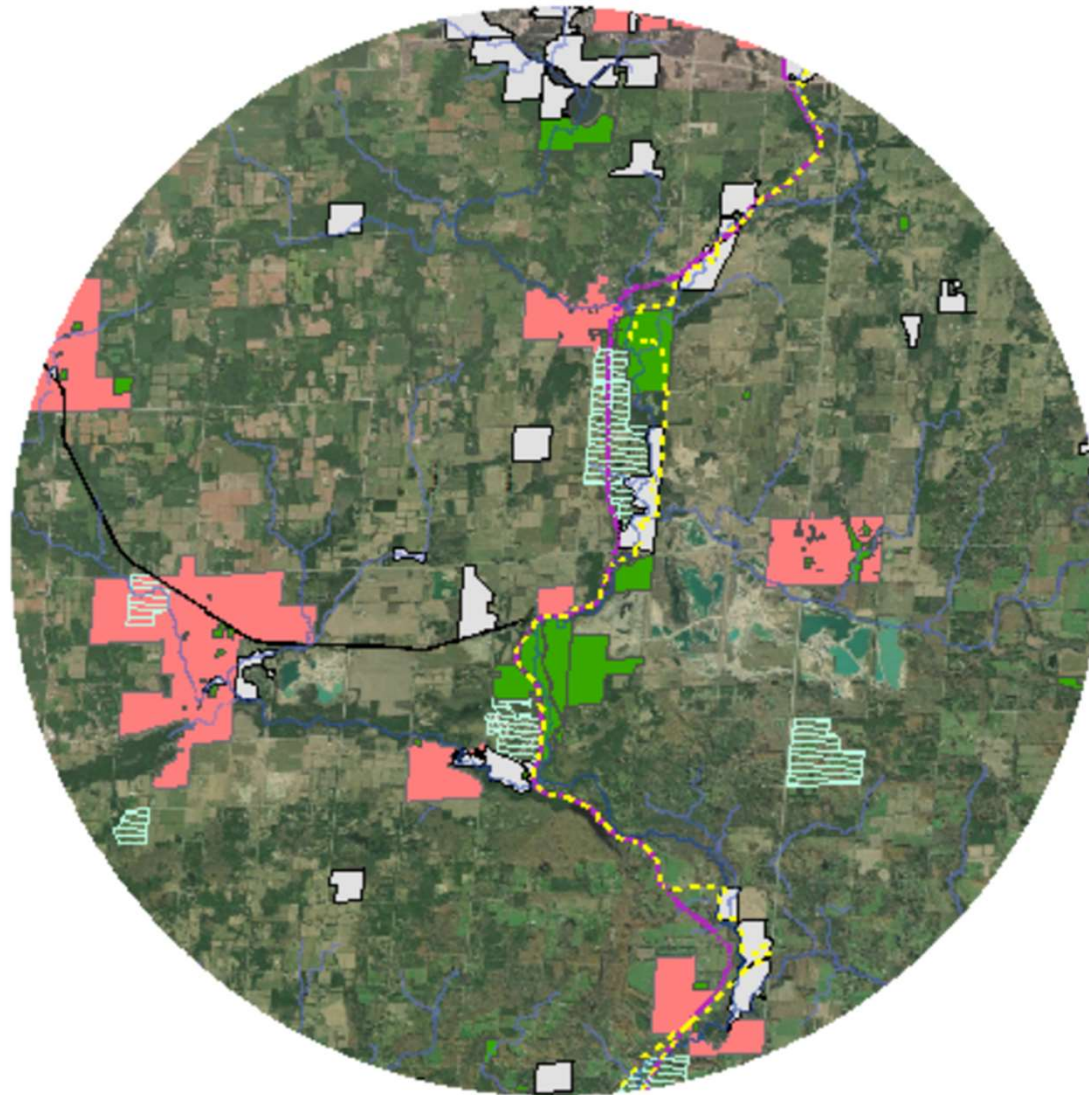


Conservation Parks

- Open to the public
- Recreation
- Nature appreciation

Pits to Parks Map



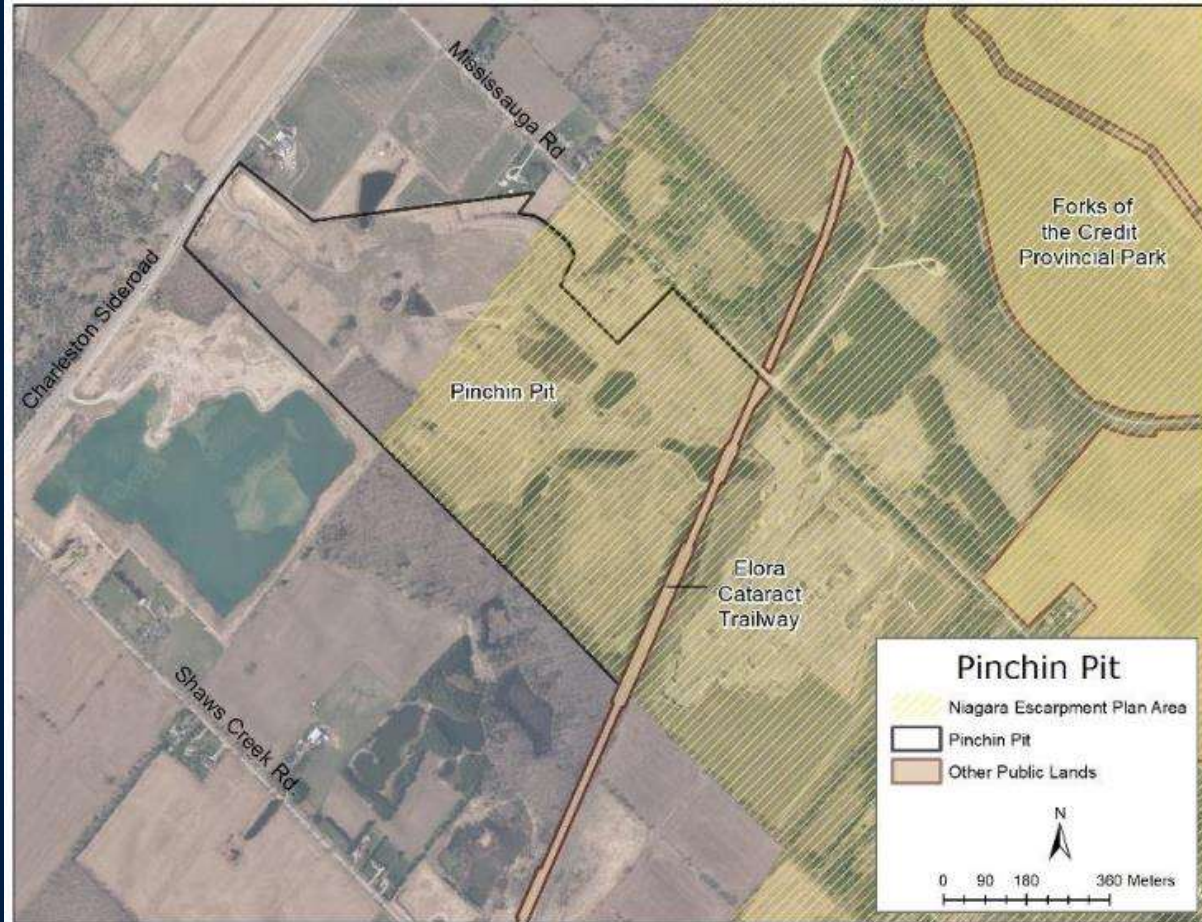


- CVC Properties
- Other Public Greenspace
- Towns
- Golf and Ski Courses
- Orangeville Brampton Railway
- CTV Optimal Route

Pits to Parks
Landscape Context

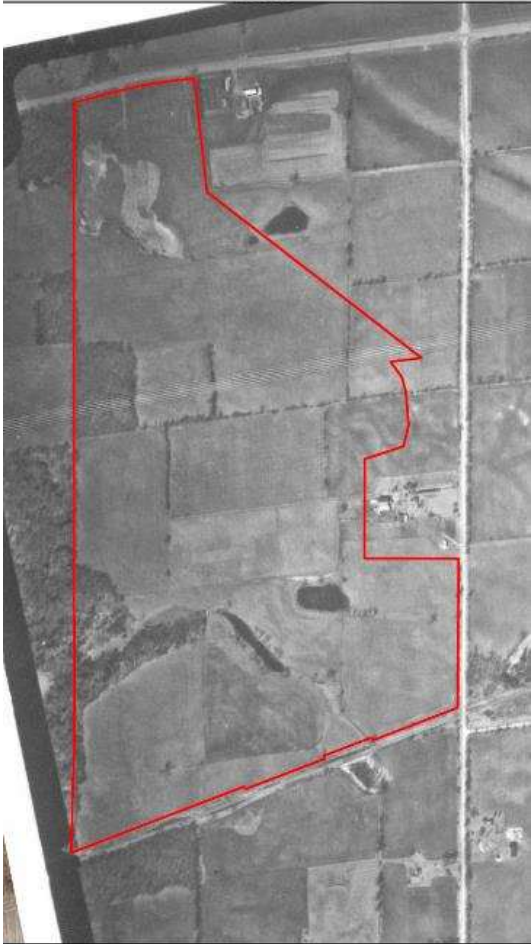
Pinchin Pit

- 61 ha (153 acres)
- Operated by Aecon for 15 years
- Acquired by CVC in 2013 for restoration and greenspace
- Southern 44 ha within the Niagara Escarpment



Pinchin Pit: Historical Land Uses

1963



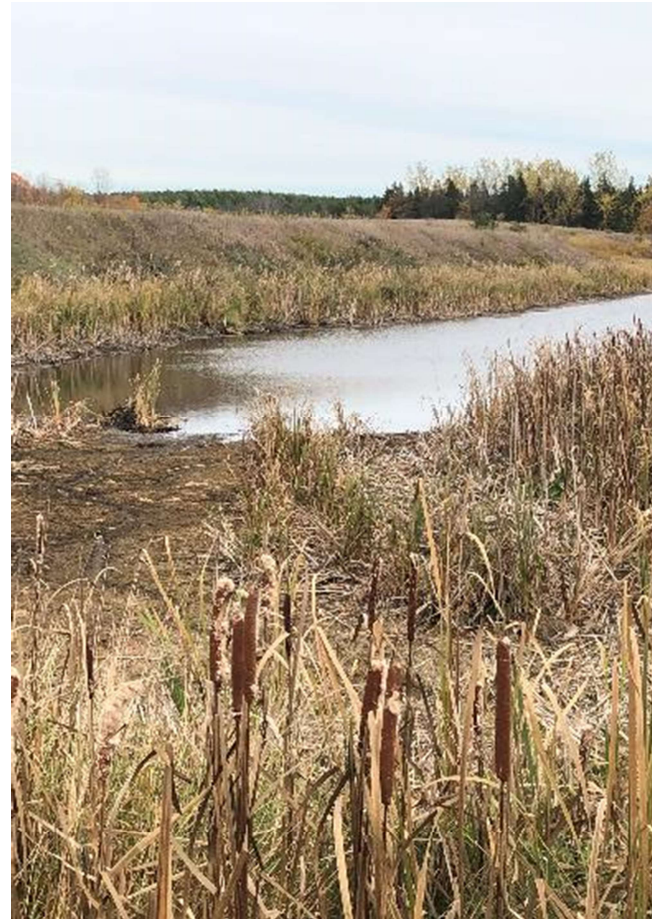
2013



2021

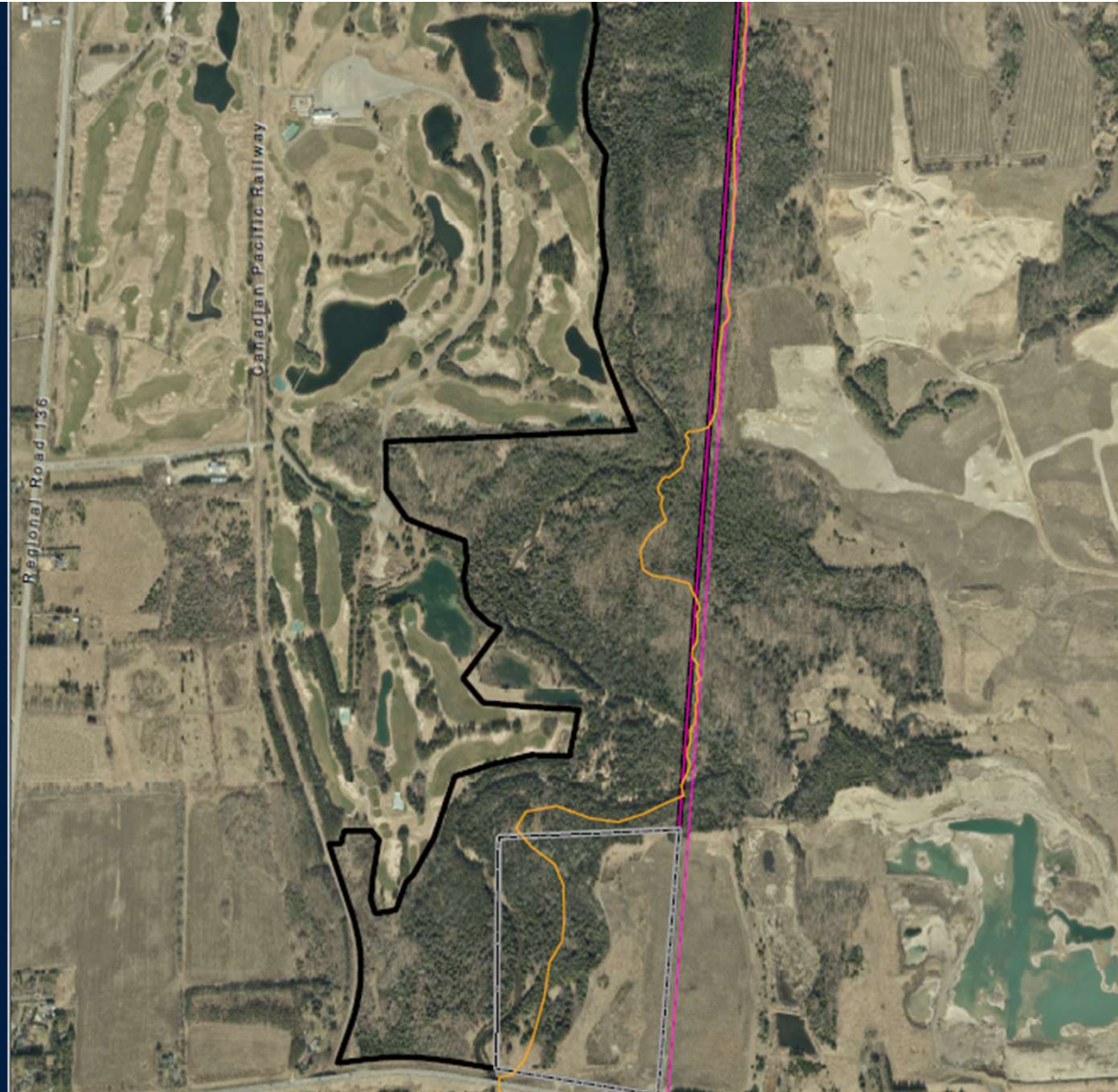


Pinchin Pit



Charles Sauriol CA (Flaherty West Pit)

- Acquired in 2019 after a robust fundraising campaign
- Road frontage and public access to Charles Sauriol CA
- Approx. 50% natural, 50% former aggregate pit



Charles Sauriol CA: Historical Land Use



1946



1971



2002

Charles Sauriol Conservation Area



Enhanced Ecological Restoration

- Above and beyond what is identified in the Aggregate Resource Act (ARA) license
- ARA rehabilitation plans were limited
- CVC focuses on native species, topography, reforestation and ecological form and function



Excess Soil

- Beneficial reuse of municipally generated excess soil
- Soil Quality Guidelines (O.Reg 406/19)



Restoration Feasibility Study

Determined that the project is technically feasible. More study is required to confirm project details. To date we have completed:

- Water Resources Risk Assessment
- Traffic Impact Study
- Archaeological Assessments
- Initiation of Community Engagement

Water Resources Risk Assessment

Characterize groundwater and surface water conditions:

- Monitoring wells, well surveys
- Soil and water quality sampling
- Groundwater modelling



Traffic Impact Study

- Asses impacts to transportation network
 - Site access
- Safety recommendations
 - Confirm haul routes



What's Next...



**Public
Engagement**

**Additional
Studies, Site
Plan**

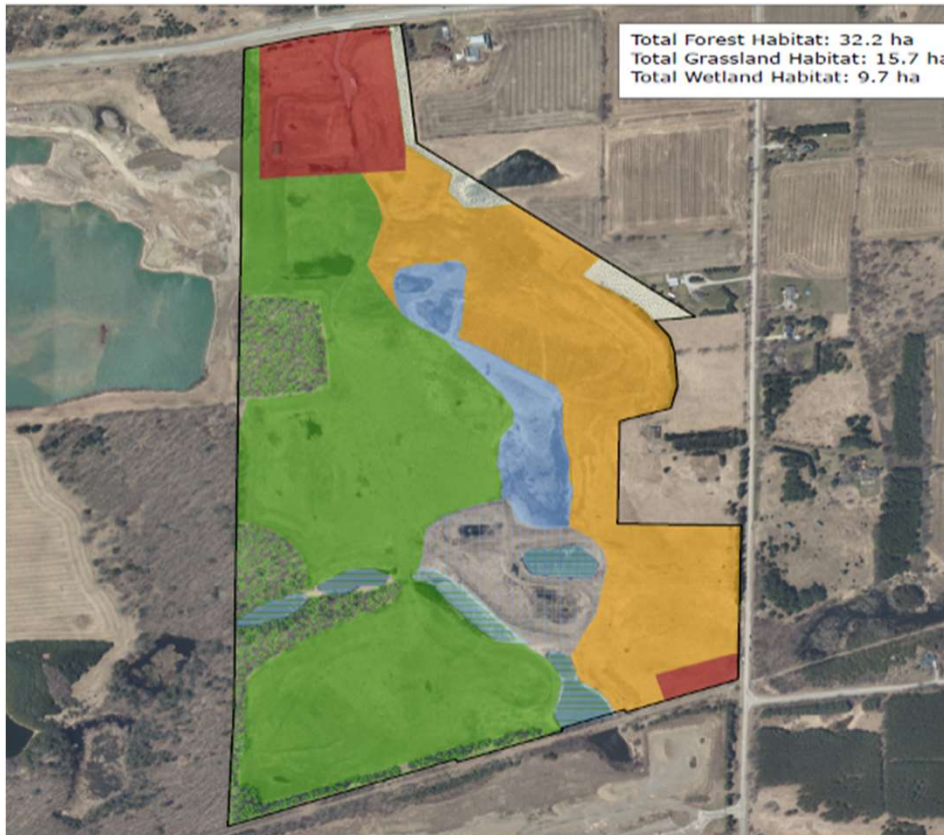


**Flaherty West Pit: Integrated Fill
Management Plan**



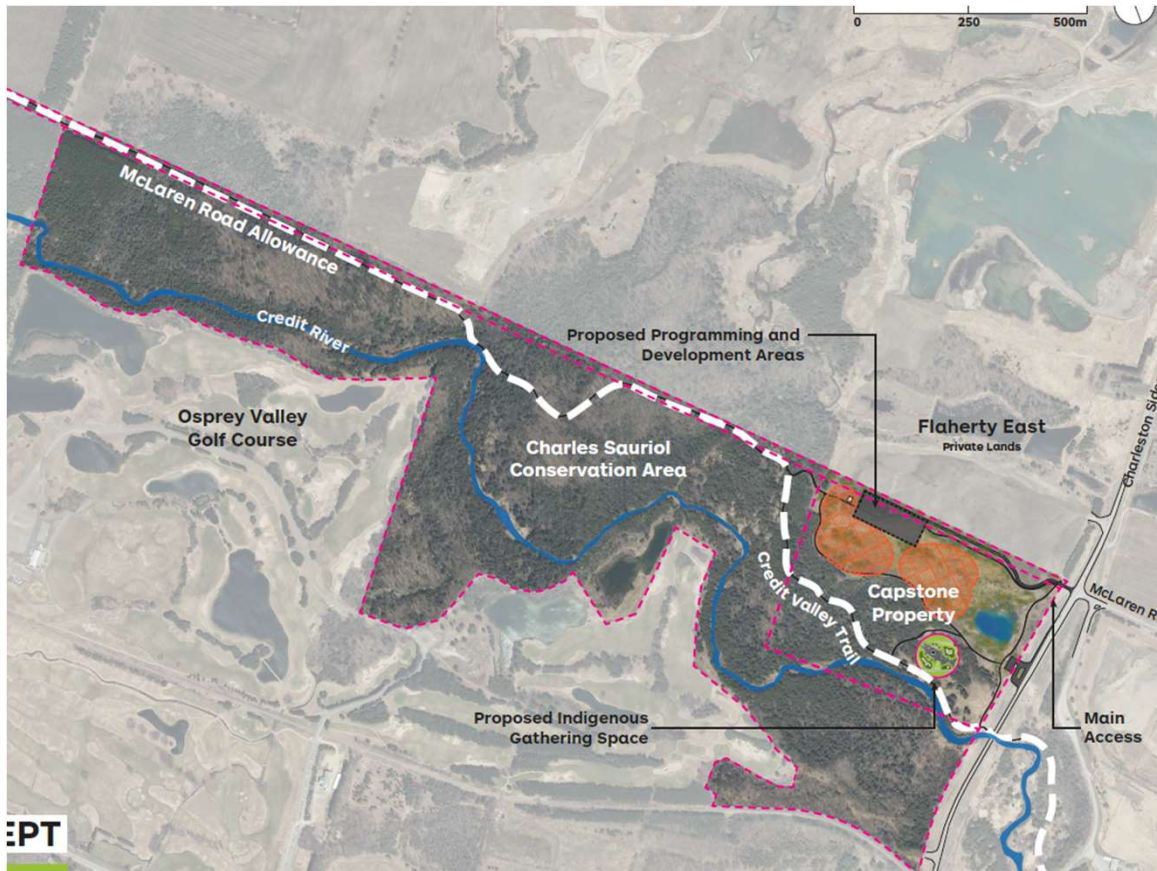
**Integrated Fill
Management Plan**

Pinchin Pit: Public Use



- Demonstration site for pit restoration in Ontario
- Identify active and passive recreation opportunities
- “Novel experiences in a novel landscape”
- Educational and interpretative opportunities
- Trail connections

Charles Sauriol Conservation Area: Public Use



- Route of the Credit Valley Trail
- Fish Site – Indigenous Gathering Space
- Indigenous educational and interpretative opportunities

Rock Garden

Royal Botanical Gardens





Area 8 (Kelso Quarry)

Conservation Halton



(C3) James Dick Quarry

Caledon Sand and Gravel





Ken Whillans Conservation Area

Credit Valley Conservation



Jim Tovey Lakeview Conservation Area

Credit Valley Conservation



Pits to Parks

Next Steps



Become involved!



Public open house
April 2024 (Alton)



Let us know what you
think

Questions?
