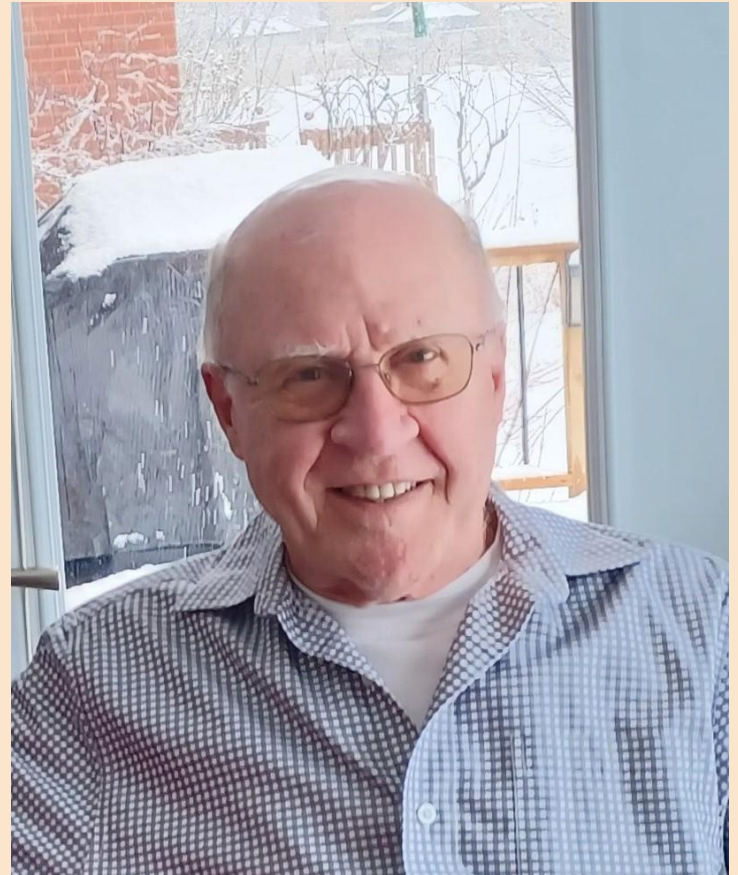


Ron Ross



Amelia Earhart

1897 - 1939





What was Amelia like?

- 5 feet 8 inches tall, 118 lbs
- Upbeat, positive
- Free-spirited nature
- Rugged individualism
- Feminist
- Avoided alcohol



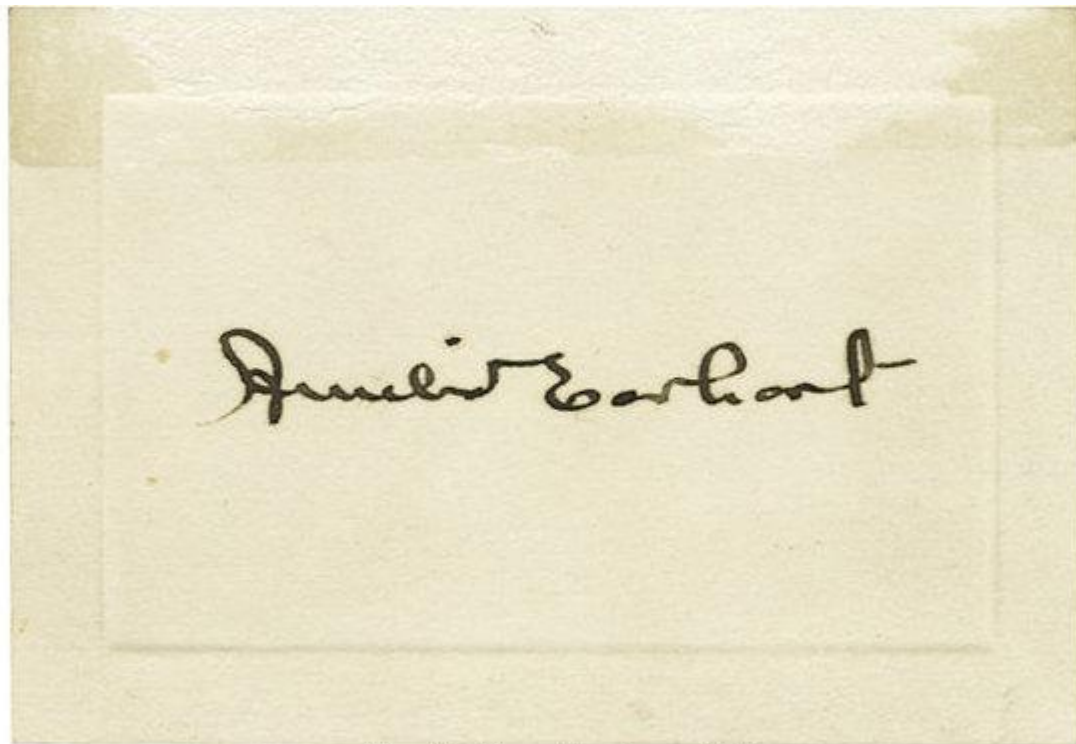
Childhood

- **Born in Kansas in 1897**
- **Parents had a troubled marriage**
- **Father moved constantly for work**
- **Liked outdoors activities**
- **Attended four different high schools**
- **More interested in learning than graduating**



Childhood

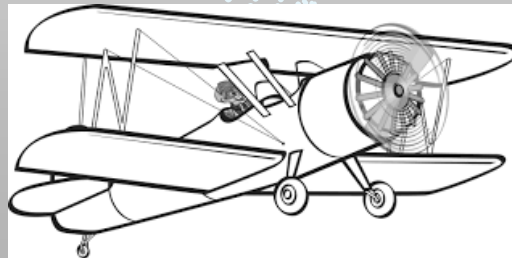




Imaged by Heritage Auctions, HA.com

Flying Achievements

- 1922 Broke women's altitude record
- **1928 First woman to fly across the Atlantic**
- 1930 Set two women's speed records
- 1931 Set women's autogiro altitude record



Flying Achievements (2)

- **1932 First woman to solo across the Atlantic (15 hrs)**
- **1932 First woman to solo nonstop coast to coast (19 hrs)**
- **1932 First person to solo Hawaii to USA (19 hrs)**
- **1935 First person to solo LA to Mexico City (13 hrs)**
- **1935 First person to solo Mexico City to Newark (14 hrs)**

**** Always air-sick on long-distance flights**

Other Achievements

- **1928 Became aviation editor for Cosmopolitan magazine**
- **1932 Elected president of the Ninety Nines (an organisation for female pilots)**
- **Awarded USA Distinguished Flying Cross**
- **Received dozens of international awards**

Lockheed Vega Specifications

- **One pilot seat**
- **6 passengers**
- **Approximately size of a Spitfire**
- **Range 700 miles**



Living in Toronto

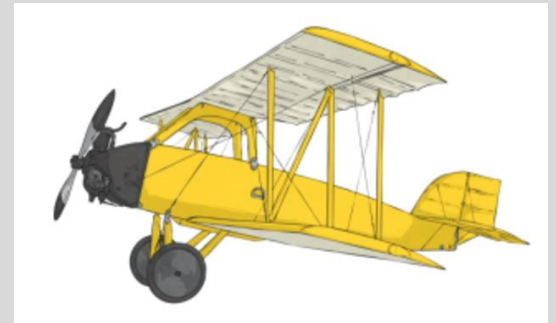
- 1917/18 to be near her sister
- Trained as an auxiliary nurse
- Worked at Spadina Hospital in the dispensary
- Became a fan of Toronto pro hockey
- Was impressed by wounded pilots
- Caught Spanish Flu, lifelong sinus problems





The 'aviatrix'

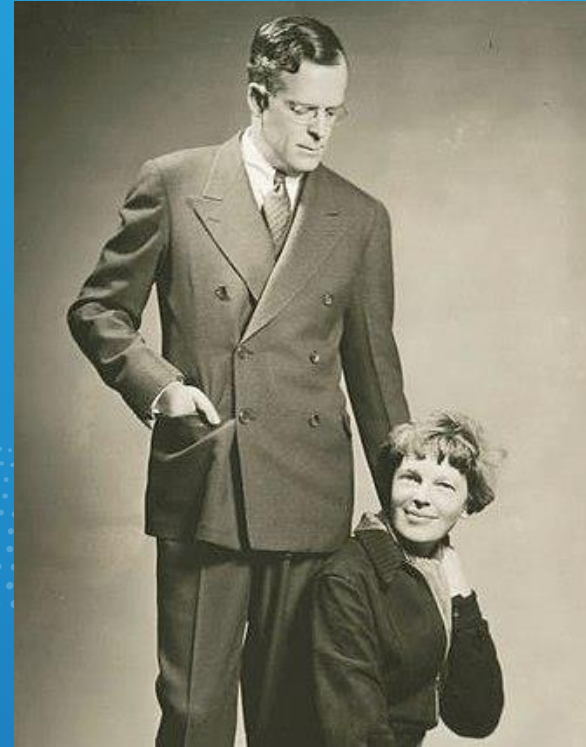
- **Went to California and took flying lessons**
- **Quickly became a competent pilot**
- **Bought her own plane, the “Canary”**
- **Became regular performer at air shows**
- **In 1922 broke the altitude record for women (14,000 ft)**
- **Got pilot’s license in 1923 !!!**
- **16th licensed female pilot in world.**
- **Sold “Canary”, moved to NY**



Marriage -1931

An unlikely union, Amelia Earhart and George Putnam.

- George Putnam was 10 years older
- Well-known publisher and promoter
- He recommended Amelia for transatlantic flight
- Proposed to Amelia 6 times
- Married for 6 years



Dear GPP

There are some things which should be writ before we are married -- things we have talked over before -- most of them.

You must know again my reluctance to marry, my feeling that I shatter thereby chances in work which means most to me. I feel the move just now as foolish as anything I could do. I know there may be compensations but have no heart to look ahead.

On our life together I want you to understand I shall not hold you to any midaevil code of faithfulness to me nor shall I consider myself bound to you similarly. If we can be honest I think the difficulties which arise may best be avoided should you or I become interested deeply (or inpassing) in anyone else.

Please let us not interfere with the others' work or play, nor let the world see our private joys or disagreements. In this connection I may have to keep some place where I can go to be myself, now and then, for I cannot guarantee to endure at all times the confinement of even an attractive cage.

I must exact a cruel promise and that is you will let me go in a year if we find no happiness together.

I will try to do my best in every way and give you that part of me you know and seem to want.

A.E.



“

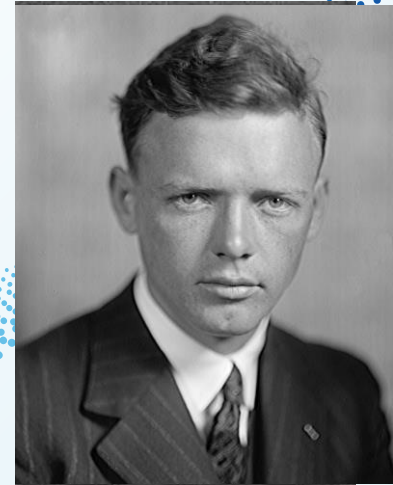
*A reasonable partnership
conducted under a satisfactory
system of dual control.*

1st Transatlantic Flight 1928



1st Transatlantic Flight

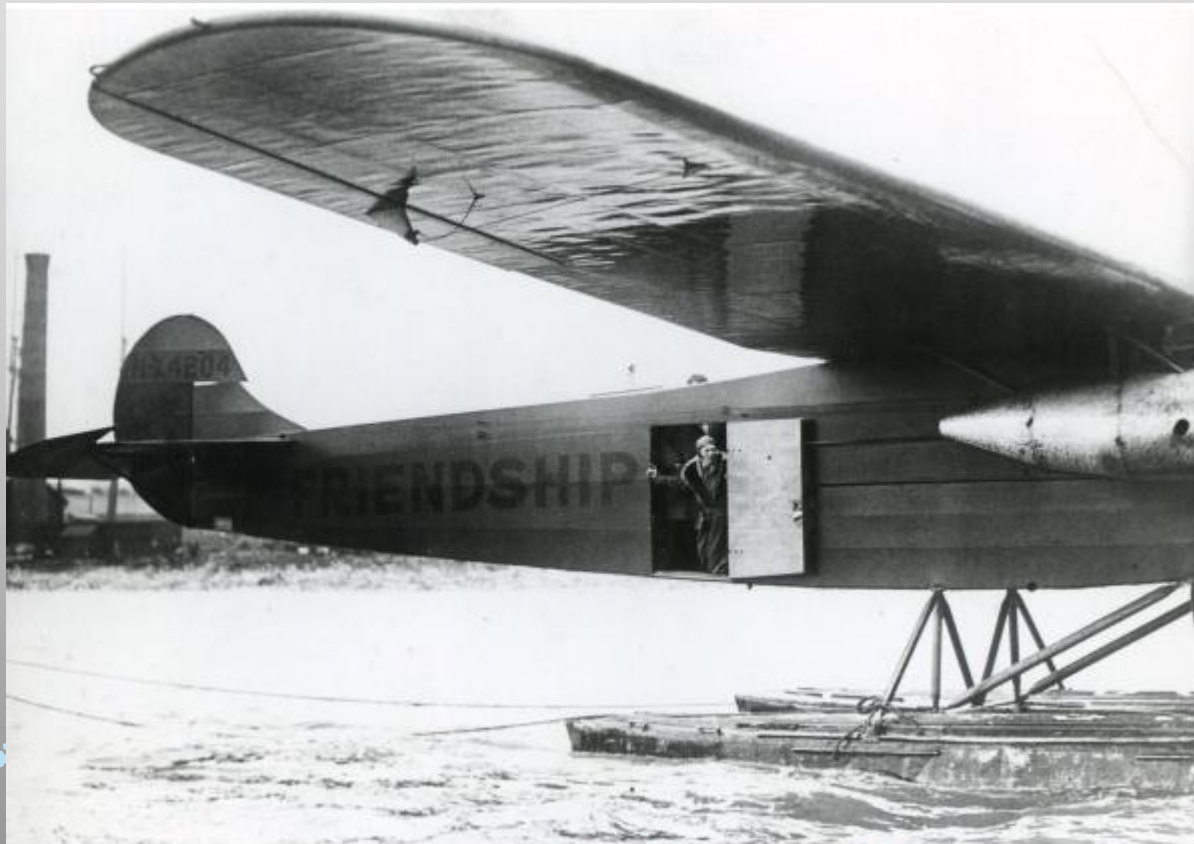
- Trimotor floatplane called “Friendship”
- Originally owned by American heiress
- Amelia was invited due to her reputation
 - Attractive, personable, pilot
- One year after Lindbergh
- Flight was highly dangerous
 - 14 people had died since Lindbergh, including 3 women
 - She wrote her will



1st Transatlantic Flight

- Numerous unsuccessful attempts to take-off
- Pilot (Stultz) was a tragic alcoholic
- Amelia was a passenger, plus two crew
- Flight took 20 hours
- Aimed for Southampton, landed in Wales, thought they were in Ireland
- Amelia was first woman to fly Atlantic
- Immediately famous





gettyimages®

Archive Photos | PhotoQuest

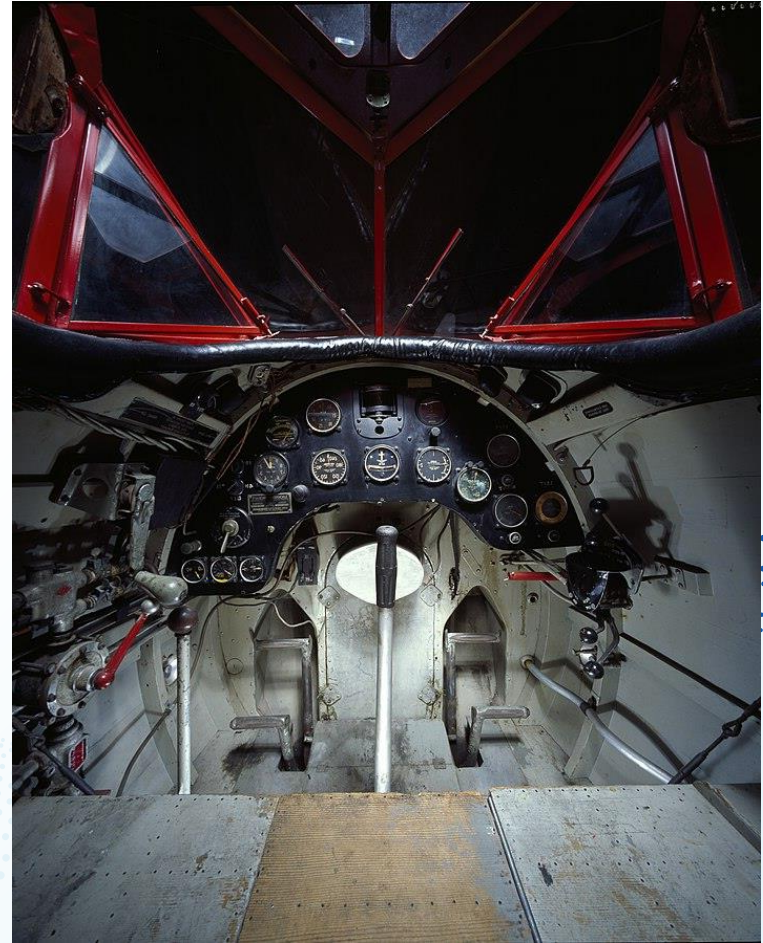
Transatlantic Solo 1932

- Destination Paris
- Exactly 5 years after Lindbergh
- 2,000 miles over water
- In last four years:
 - No successful solo flights
 - 2 solo attempts, pilots died
 - 8 pilots died in dual attempts
- Weather information sparse
- Thermos of soup and tin of tomato juice



Transatlantic Solo Flight (2)

- Departed Harbor Grace at 7:15PM
- Fighting for her life within 4 hours
 - Severe electrical storm
 - Altimeter failed
 - Tachometer failed
 - Manifold gasses caught fire. Flames through the cowling
 - Fuel tank sprung a leak, dripped gas onto her
- Then things got worse



Transatlantic Solo Flight (3)



- There was no turning back to the unlit field
- Ice began to form on the wings
- Ice-covered plane went into a spin at 12,000 ft
 - Ice flaked off
 - Pulled out of spin at wave-top height
 - Next 10 hours was a fight for life
- Fuel gauge failed
- Landed at first available field in Ireland (15 hrs)

Aftermath of Solo Flight

- Amelia was immediate international superstar
- Messages from numerous heads of state.
- 12 days in London, then onto tumultuous welcomes in France, Italy, and Belgium
- Reception in US was overwhelming
- Her privacy was gone forever.



Hawaii to USA Solo

- 2400 miles over ocean
- Repeated attempts to dissuade her
- Considered absurdly risky
 - 10 previous pilots lost at sea
- First person solo in either direction
- 19 hours duration
- Ventilator cover blew off canopy
 - Constant air blast damaged eyeball
- Needed navigation help from a ship





“

*It's easier to hit a continent than
an island.*

The Activist

- **Champion of women's rights**
- **Promoted the role of female pilots**
- **Promoted commercial air travel**
- **Career counsellor for women at Purdue U**
- **Kept her maiden name after marriage**



Life as a Superstar

- Hundreds of speaking engagements
- Sold own clothing line through Macy's
- Partnered new commercial airlines
- Advocated for women's equality
 - Refused to pilot Mary Pickford
- Assisted her family financially





“

The woman who can create her own job is the woman who will win fame and fortune.



“

The most difficult thing is the decision to act. The rest is merely tenacity.

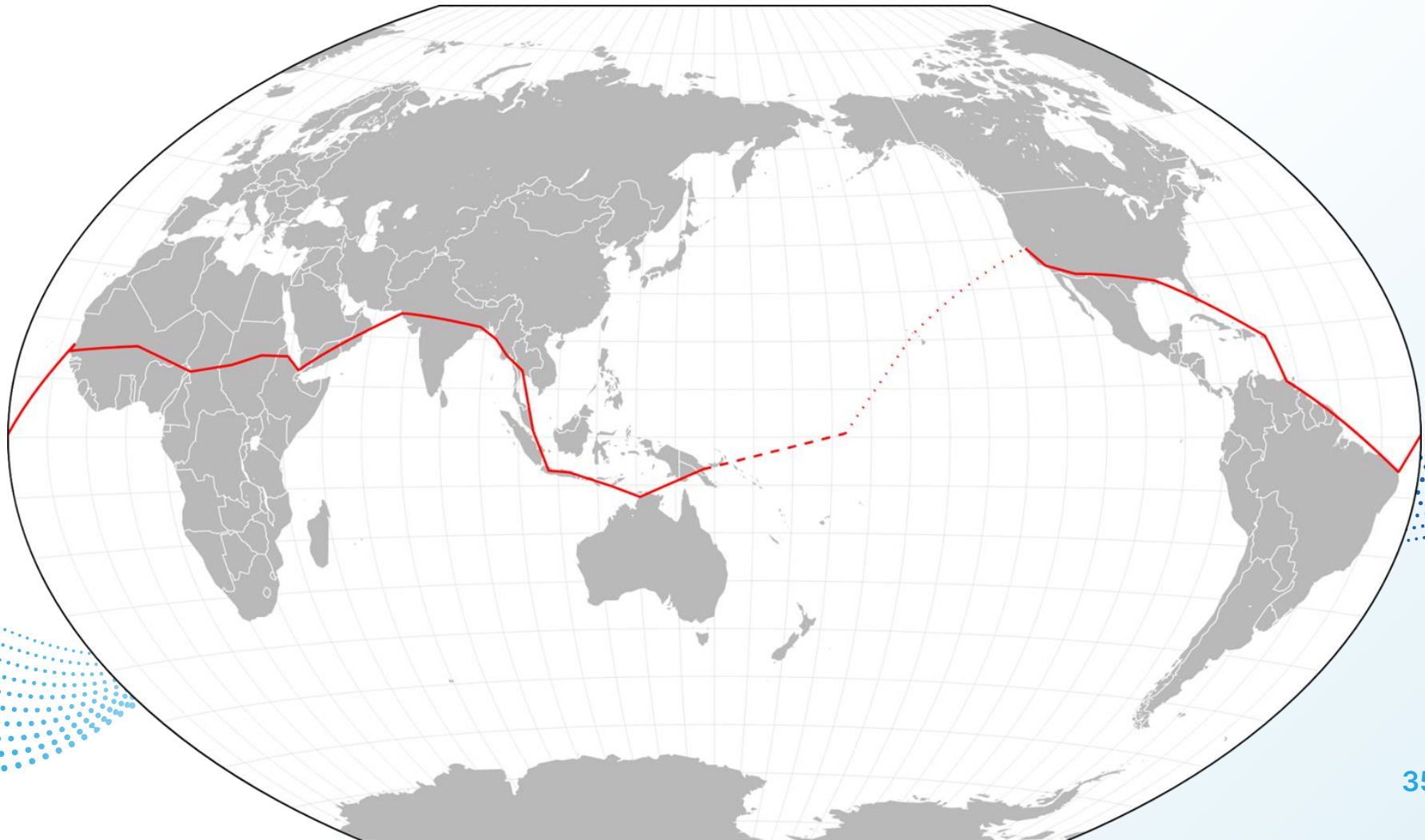
Around the World -1937

- One last record
- Not the first person to do it
- Around the world “the long way”
- Enthusiastically supported by husband

Wiley Post

- Around the world solo in 1933
- Used a Lockheed Vega
- Much shorter northern route
- 15,600 miles
- 8 days





Lockheed Electra 10E

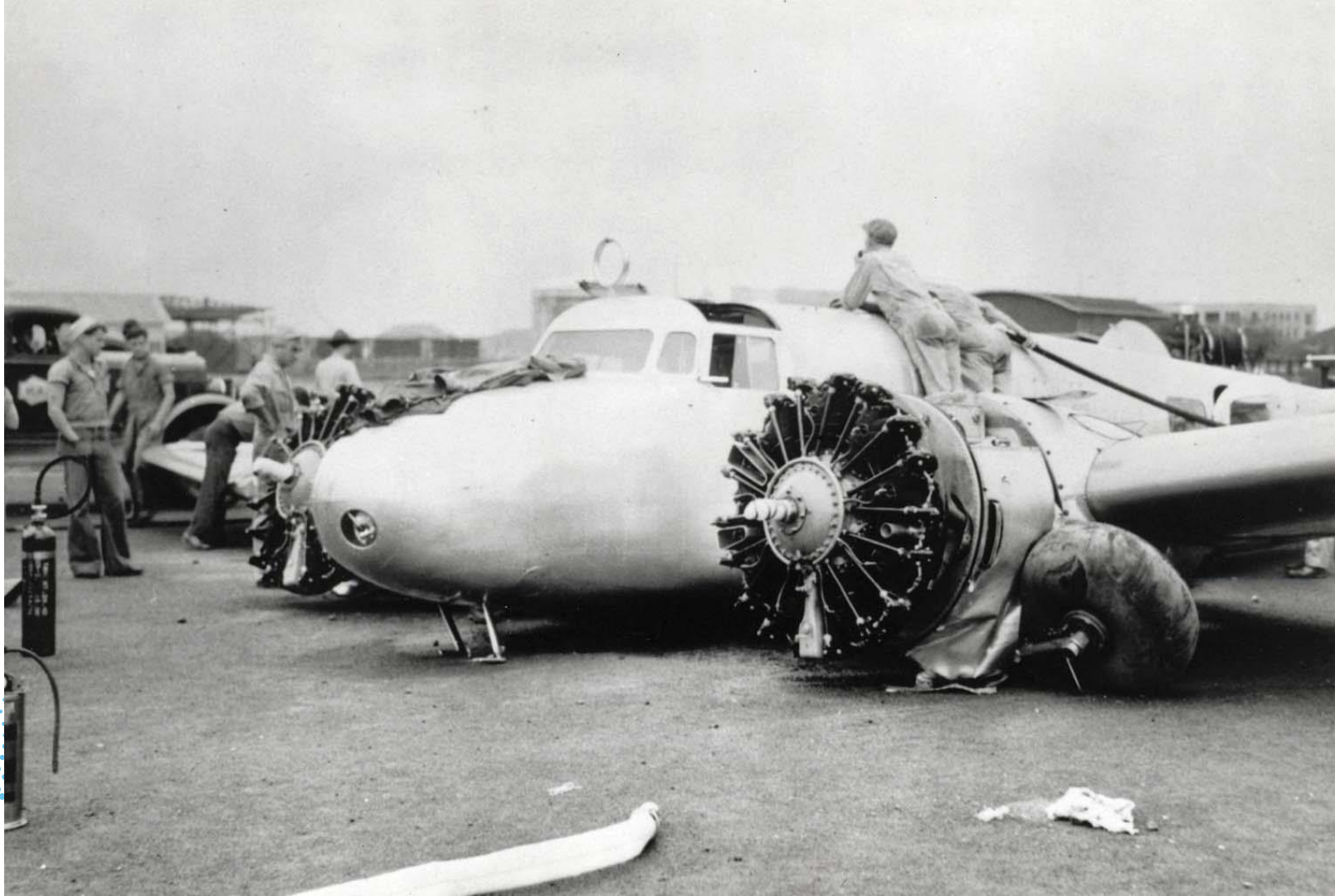






Eastbound Into History

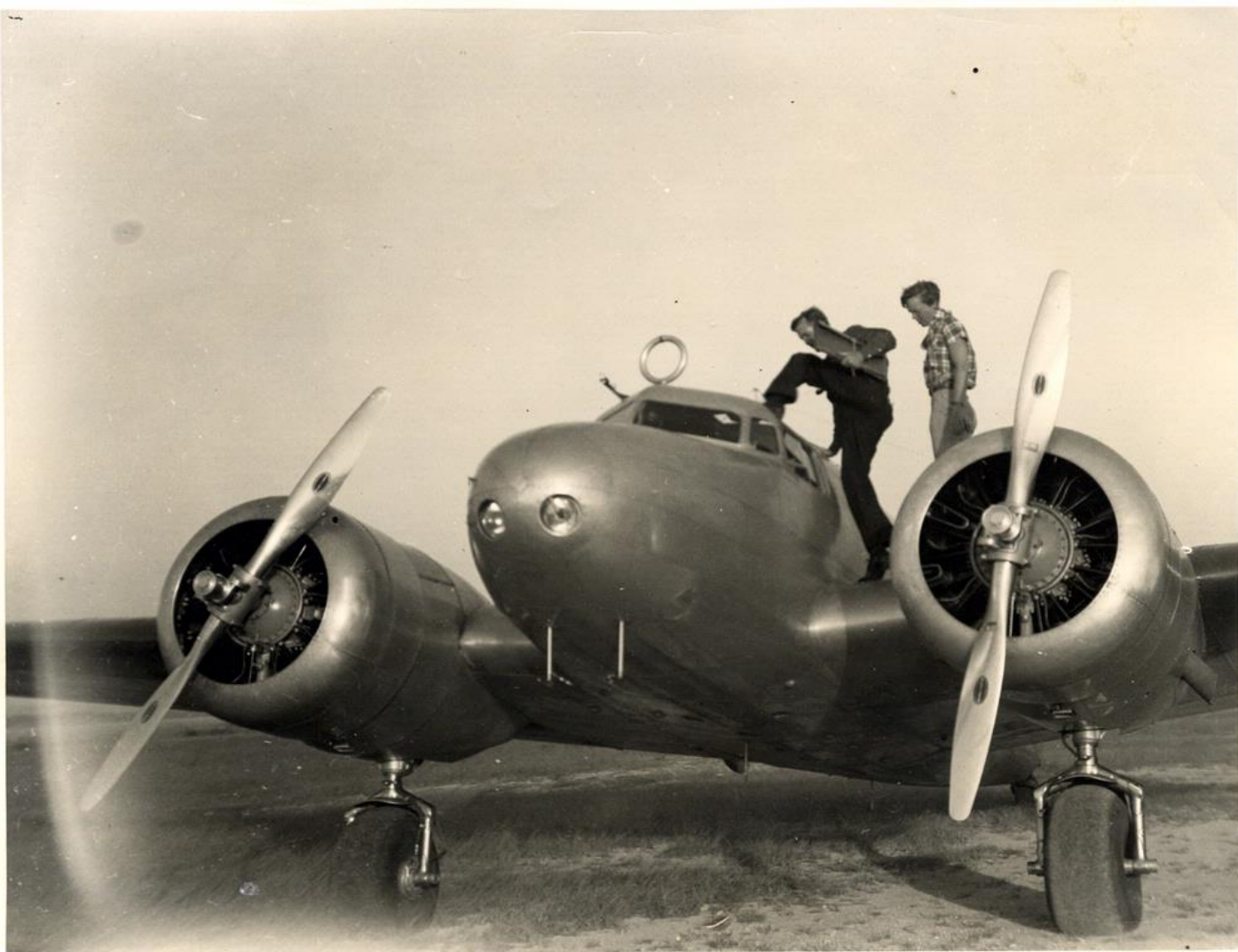
- Westbound attempt failed after crash in Hawaii
- Radio operator had to leave project
- Eastbound attempt began May 21
- Airborne for 27 days of the next 38
- Numerous delays enroute from poor weather, maintenance, and illness.
- Lae, New Guinea was 27th stop. Only 3 to go





Lae, New Guinea

- Arrived on June 29
- Next leg most dangerous of the trip
- Howland Island, 2,500 miles away
 - Tiny desert island
 - 1 square mile, 20 feet max. elevation
- Celestial navigation and dead reckoning



Fatal Flight ... Facts

- Amelia alone in cockpit, Noonan in cabin
- Star sights were required for navigation
- Chart had Howland in wrong place
- Amelia knew her radio skills were inadequate
- Maximum fuel loaded
- Amelia ill at departure
- ETA at Howland was 6:30AM (21 hours)



On board *USS Itasca*

- At 4:53 AM *Itasca* heard her at volume S-1
- Amelia failed to hear any broadcast from *Itasca*
- At 6:45AM, Amelia radioed that she was about 100 miles out, volume S-4
- Next call received at 7:42AM, S-5, “Only 30 minutes of gas left”.
- Again at 8:00AM, also S-5
- Last call at 8:44AM, “Running north and south”.





“

*When I go I would like to go in my
plane. Quickly.*

Aftermath

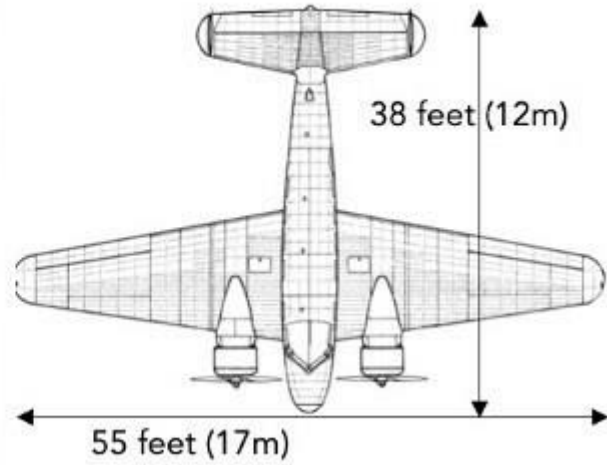
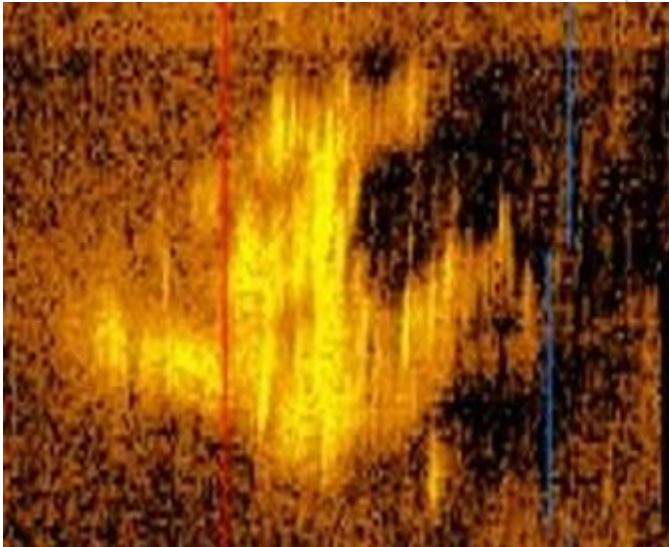
- Massive search lasting 16 days
 - 10 ships, 65 airplanes
- Covered area the size of Texas
- No trace of plane or crew ever found
- Official position is that Amelia Earhart crashed and died near Howland island

Conspiracy theories

1. Amelia was a US spy on a secret mission
2. Amelia was captured and executed by the Japanese
3. Landed on Gardner Island

Recent Popular Theory

- Amelia landed safely on Gardner Island
 - TIGHAR created this theory
 - 400 miles away
 - Searched 2 weeks after disappearance
 - No sign of any aircraft
 - No link to Amelia ever established



What *really* happened to Amelia Earhart?

All her family, friends, colleagues, and reputable historians agree:

- She got lost on her way to Howland Island and crashed into the Pacific Ocean.



Amelia Earhart
1897 - 1939

**A Remarkable
Woman**



